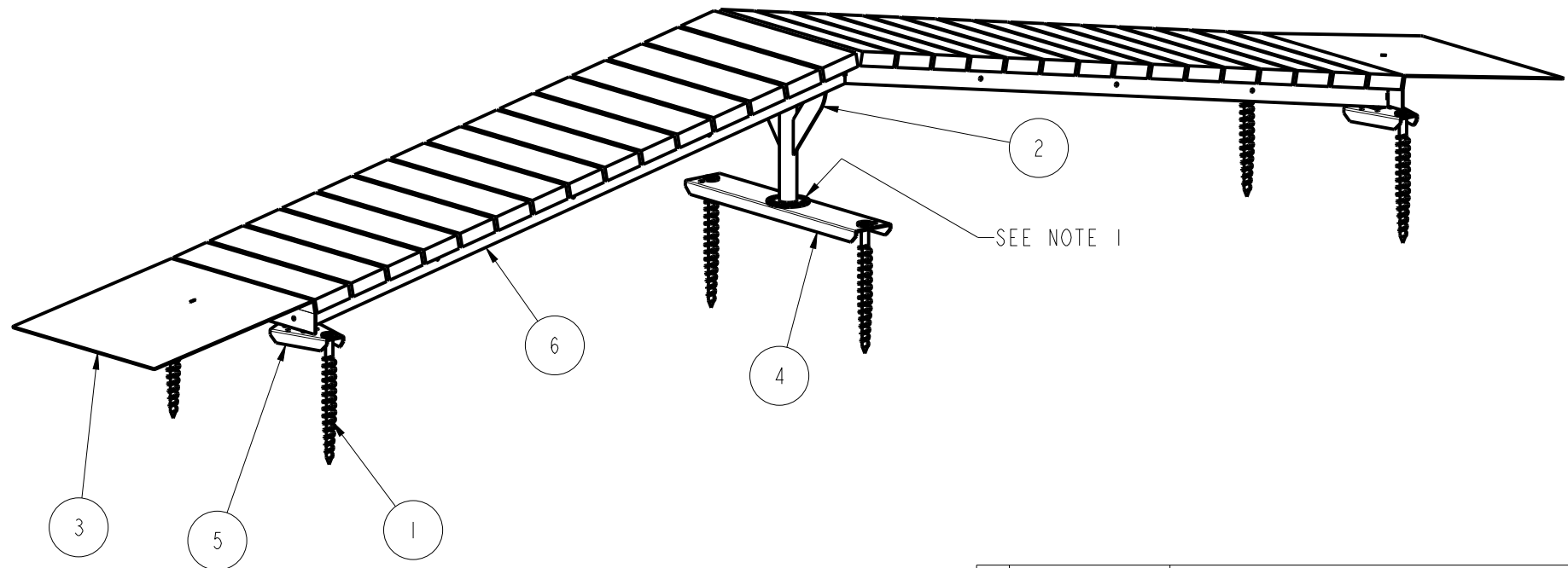


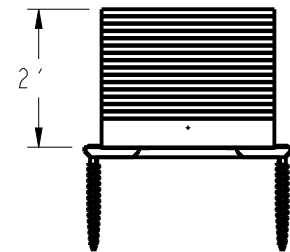
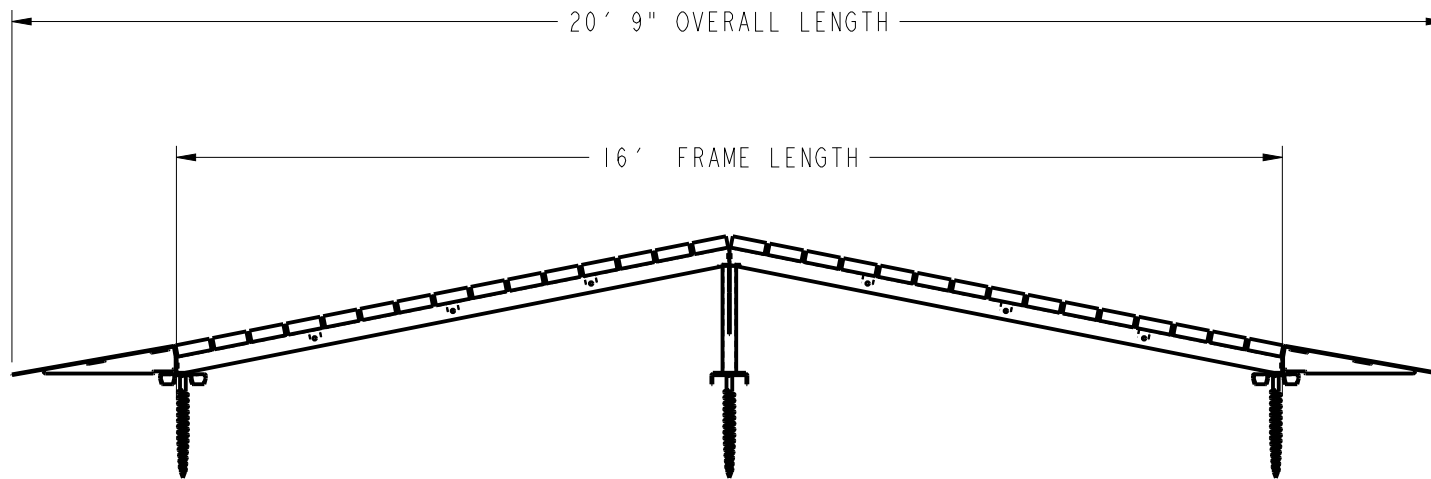
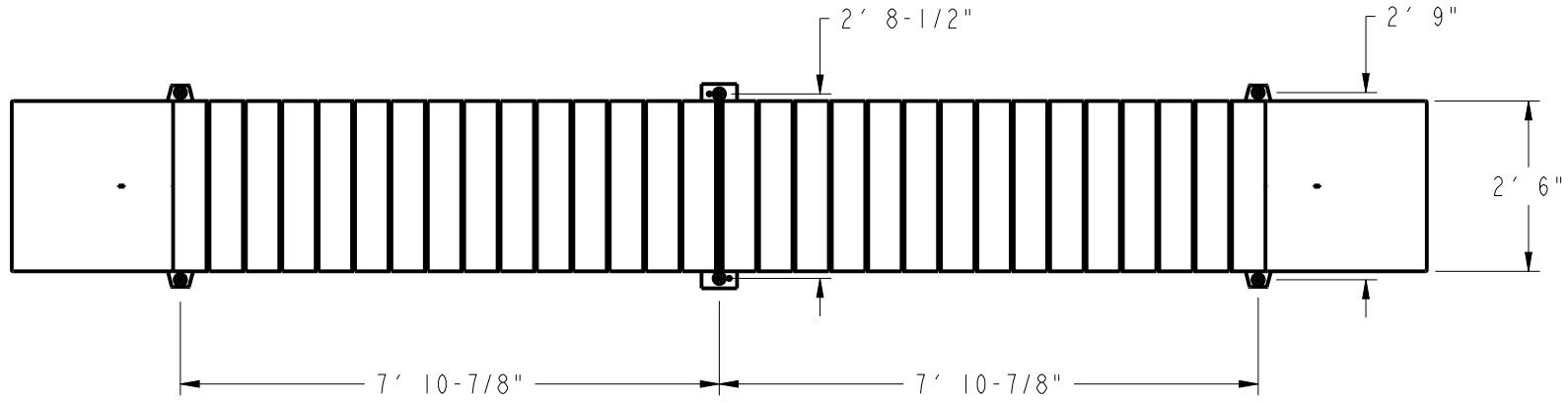
REVISION HISTORY			
REV	DESCRIPTION	REVISED	DATE
A	CHANGED TOE PLATES WITH NEW DESIGN.	K. M.	5-30-23



- NOTES:
1. USE 1-1/4" LONG FASTENERS AT BASE OF FIXED LEG SUPPORTS.
  2. USE (4) 3/8" FASTENERS AT FRAME TO FRAME JOINTS.
  3. USE (6) 3/8" FASTENERS AT SUPPORT TO FRAME JOINTS

ITEM	PART NUMBER	DESCRIPTION	QTY
6	170110094W	RAMP FRAME ASSY., 30" LUMBER, 2' ELEV., 11" RAMP	2
5	170510596	SCREW ANCHOR PLATE, SINGLE, 1.5" ANCHOR HOLE	4
4	170510591	ANCHOR CHANNEL, 36" WIDE	1
3	170210009	TOE PLATE ASSY., 30" WIDE, 10" ANGLE	2
2	170200010	FIXED LEG SUPPORT, 2' HIGH, 17" WIDE	1
1	110460024	EARTH ANCHOR, 18" LONG	6

<b>TOLERANCES</b> UNLESS OTHERWISE SPECIFIED (X.X) : ±0.125 (X.XX) : ±0.060 (X.XXX) : ±0.030 ANGULAR : ±1.0°				601 S. MCKINLEY AVE. JOPLIN, MO 64801-3220 PH: 855-727-7267 <a href="http://www.progressivebikeramps.com">www.progressivebikeramps.com</a>	
DIMENSIONS ARE IN INCHES DRAWN BY : R. BOTTS Aug-15-22		PROPRIETARY THIS DOCUMENT CONTAINS PROPRIETARY DATA BELONGING TO PROGRESSIVE BIKE RAMPS IT IS NOT TO BE COPIED OR DISTRIBUTED TO ANYONE WITHOUT WRITTEN PERMISSION.	REVISION LEVEL A	A-FRAME 2' HIGH, 30" WIDE, EA	
RELEASE LEVEL Released		MASS (POUNDS) 403	DWG NO. AF-2301		SHEET 1 OF 2



**TOLERANCES**  
UNLESS OTHERWISE SPECIFIED

(X.X) : ±0.125  
(X.XX) : ±0.060  
(X.XXX) : ±0.030  
ANGULAR : ±1.0°

DIMENSIONS ARE IN INCHES

DRAWN BY : R. BOTTS Aug-15-22

RELEASE LEVEL

Released

<p><b>PROGRESSIVE BIKE RAMPS</b></p> <p>THIS DOCUMENT CONTAINS PROPRIETARY DATA BELONGING TO PROGRESSIVE BIKE RAMPS. IT IS NOT TO BE COPIED OR DISTRIBUTED TO ANYONE WITHOUT WRITTEN PERMISSION.</p>	601 S. MCKINLEY AVE. JOPLIN, MO 64801-3220 PH: 855-727-7267 www.progressivebikeramps.com
	PROPRIETARY THIS DOCUMENT CONTAINS PROPRIETARY DATA BELONGING TO PROGRESSIVE BIKE RAMPS. IT IS NOT TO BE COPIED OR DISTRIBUTED TO ANYONE WITHOUT WRITTEN PERMISSION.
A-FRAME 2' HIGH, 30" WIDE, EA DWG NO. AF-2301	
DO NOT SCALE THIS PRINT	